

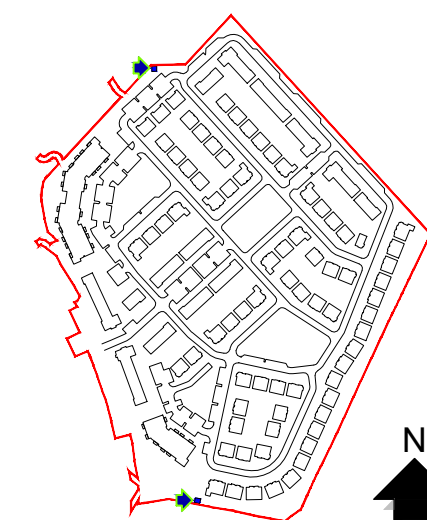
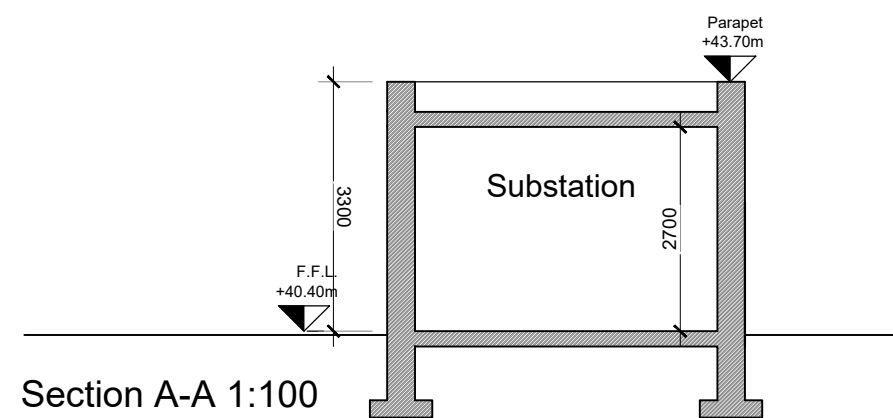
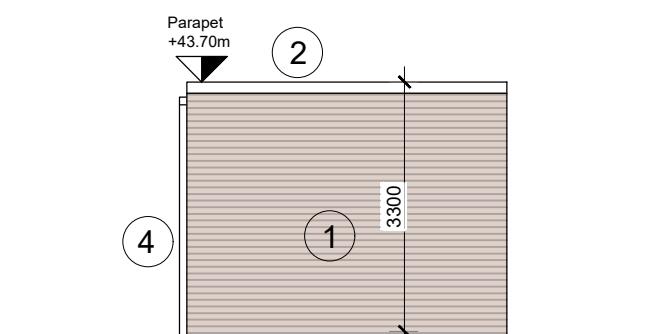
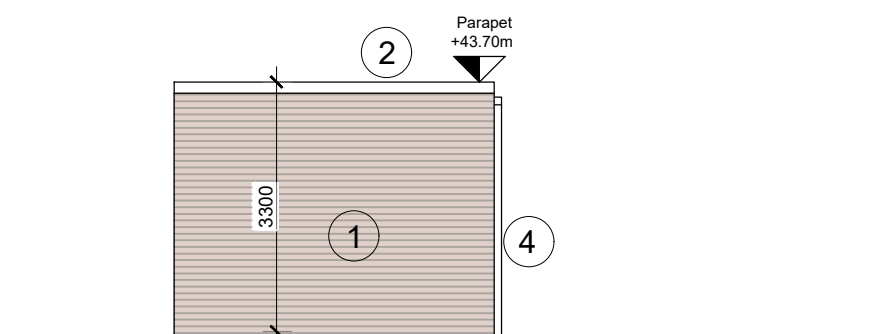
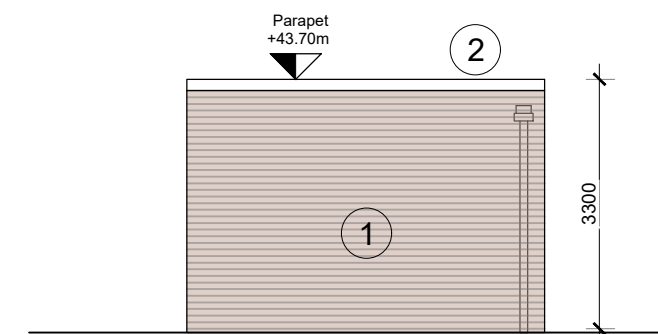
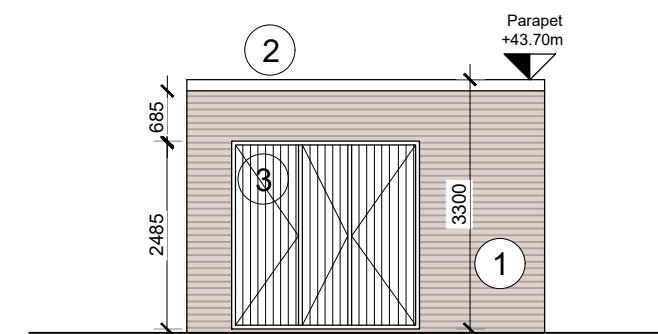
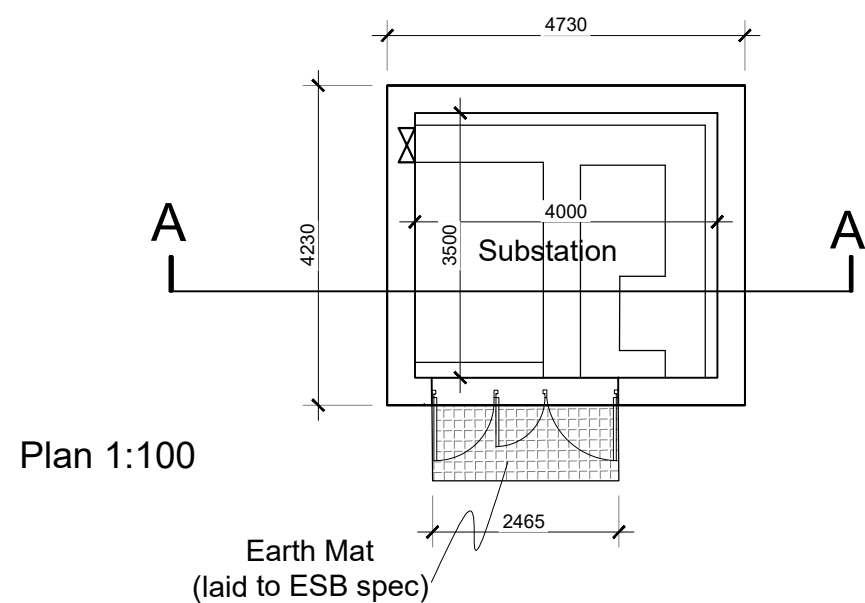
- GENERAL NOTES
1. COPYRIGHT RESERVED
 2. DO NOT SCALE DRAWING. USE FIGURED DIMENSIONS ONLY.
 3. ALL DISCREPANCIES TO BE REPORTED TO ARCHITECT.
 4. THE CONTRACTOR IS RESPONSIBLE FOR CHECKING ALL LEVELS AND DIMENSIONS.
 5. ALL STRUCTURE TO BE TO STRUCTURAL ENGINEERS DETAILS.
 6. ALL MECH & ELEC SERVICES TO SERVICES ENGINEERS DETAILS.
 7. ALL PROPRIETARY ITEMS TO BE INSTALLED IN ACCORDANCE WITH MANUFACTURERS INSTRUCTIONS.
 8. CONTRACTOR IS RESPONSIBLE FOR THE COORDINATION OF STRUCTURE FINISHES AND SERVICES.

| REV | DATE | DESCRIPTION | BY |
|-----|------|-------------|----|
| | | | |
| | | | |
| | | | |
| | | | |

ESB Sub-Station Plan, Section and Elevations

MATERIALS LEGEND

1. Selected brick
2. Pressed metal capping to parapet
3. Hot-dip galvanised mild steel doors
4. Rainwater pipe (non-metallic)



JOHN FLEMING
ARCHITECTS

103 LEESON STREET UPPER, DUBLIN 4.
T: (01) 6689888 E: info@jfa.ie W: www.jfa.ie

CLIENT
Ardstone Homes Ltd

PROJECT
RESIDENTIAL DEVELOPMENT
CRODAUN, CELBRIGDE, CO. KILDARE

DRAWING
ESB Sub-Stations
Plan, Section and Elevations

SCALE 1:100 @ A3 JOB NO. 1744

DRAWN BY RJ

DATE Nov 2019

DRAWING NUMBER P-ESB-0-1 REVISION -

DRAWING LOCATION
w:\17 jobs\1744\03-planning\31 planning application\312.dwg

DRAWING STATUS
PLANNING