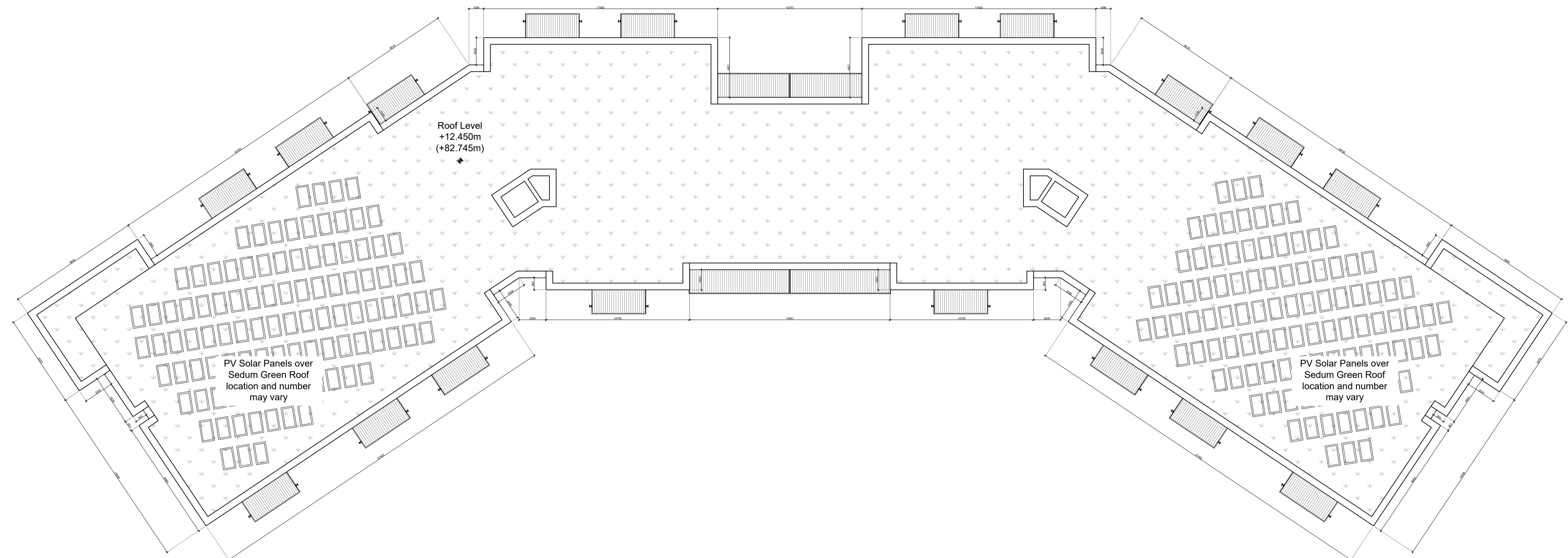


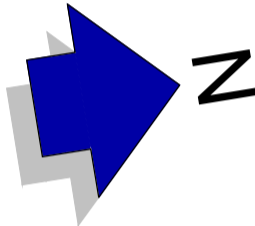
- GENERAL NOTES**
1. COPYRIGHT RESERVED
 2. DO NOT SCALE DRAWING. USE FIGURED DIMENSIONS ONLY.
 3. ALL DISCREPANCIES TO BE REPORTED TO ARCHITECT.
 4. THE CONTRACTOR IS RESPONSIBLE FOR CHECKING ALL LEVELS AND DIMENSIONS.
 5. ALL STRUCTURE TO BE TO STRUCTURAL ENGINEERS DETAILS.
 6. ALL MECHA/ELEC SERVICES TO SERVICES ENGINEERS DETAILS.
 7. ALL PROPRIETARY ITEMS TO BE INSTALLED IN ACCORDANCE WITH MANUFACTURERS INSTRUCTIONS.
 8. CONTRACTOR IS RESPONSIBLE FOR THE COORDINATION OF STRUCTURE FINISHES AND SERVICES.

REV	DATE	DESCRIPTION	BY

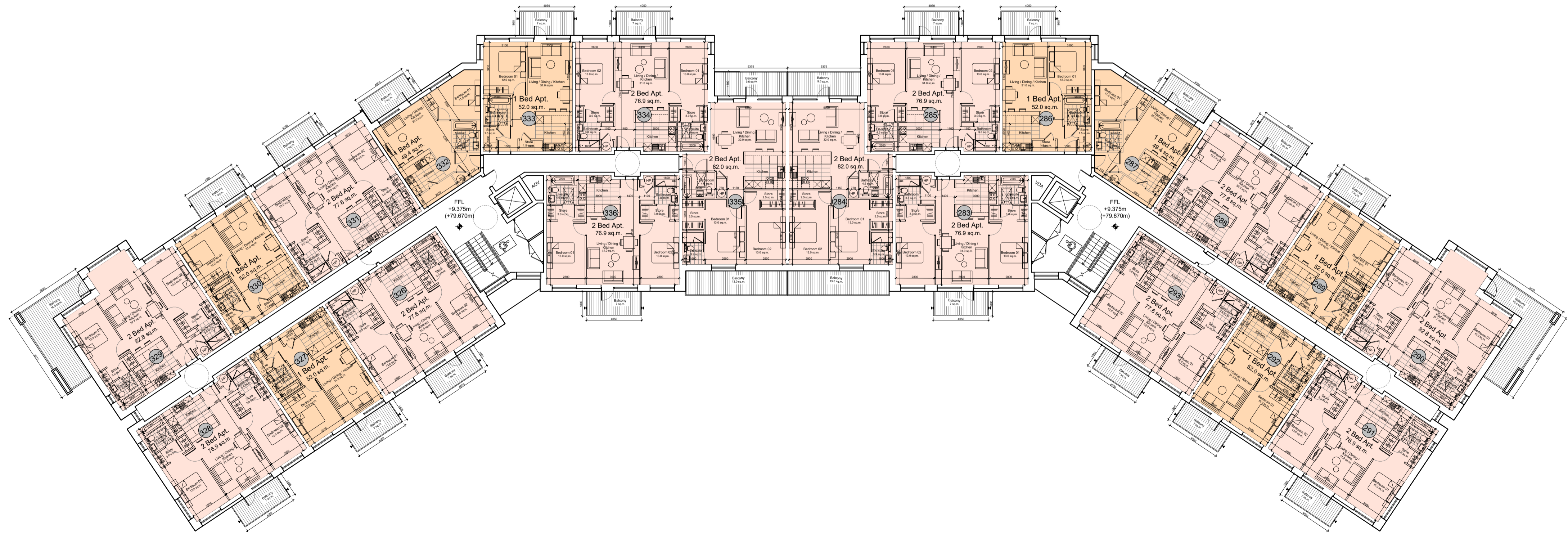


Apartment Block A
Unit No.s 251-336

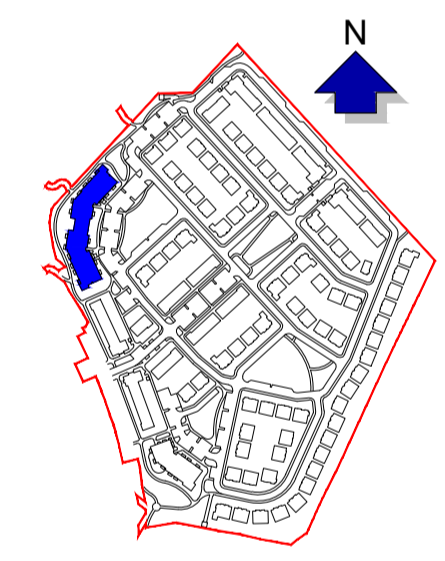
No. of floors: 4
Total no. of units: 86
No. of 1 Bed units: 32
No. of 2 Bed units: 54
No. of bicycle spaces: 144
No. of bins: 16no. 1100L + 6no. 240L
Gross area per typical floor: 1,815 sqm
TOTAL FLOOR AREA: 7,260 sqm



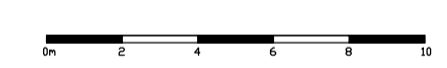
Roof Plan



Third Floor Plan



SITE PLAN
NOT TO SCALE



JOHN FLEMING ARCHITECTS
103 LEESON STREET UPPER, DUBLIN 4.
T: (01) 6689888 E: info@jfa.ie W: www.jfa.ie

CLIENT
Ardstone Homes Ltd

PROJECT
Residential Development at
Crookan, Cabridge, Co. Kildare

DRAWING
Apartment Block A
3rd Floor and Roof Plan

SCALE 1:200 @ A1 JOB NO. 1744
DRAWN BY RJ
DATE November 2019 REVISION
DRAWING NUMBER P-AA-0-2

DRAWING LOCATION
*17_jfa\1744\13-planning\31_planning_application\312.dwg

DRAWING STATUS
PLANNING